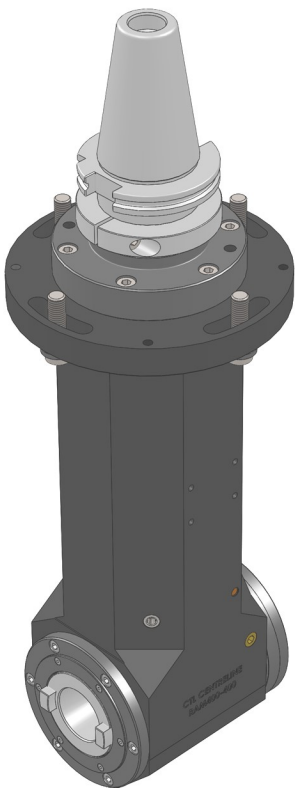


# RAM400 - 450 Extended Heavy Duty 90° Angle Head

400



## Technical Data

|  |                                 |        |
|--|---------------------------------|--------|
|  | ISO40 Steep Taper Adapter       |        |
|  | Max. 2,500rpm Speed ratio 1 : 1 |        |
|  | Max. @ 2,500rpm                 | 20kW   |
|  | Max. @ 100rpm                   | 143Nm  |
|  | (Without tools)                 | 55.2kg |
|  | Input Opposite to Output        |        |

