



Greenstock Blanks

Units 7, 9 & 11, Paragon Way, Bayton Road industrial Estate, Coventry. CV7 9QS. UK

Tel: +44 (0)24 7664 5999 Email: info@coveng.co.uk

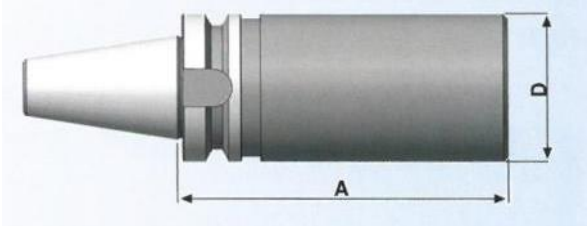
www.coveng.co.uk

PRODUCT	PAGE
BT TOOLHOLDERS MAS 403 BT (JIS B 6339)	3
HSK TOOLHOLDERS ISO 12164 (DIN 69893)	5
DV TOOLHOLDERSSK (DIN 69871)	8
DT TOOLHOLDERS DK (DIN 2080)	10
P TOOLHOLDERS EPS (ISO 26623-1)	12
VDI STATIC TOOLING DIN69880 FORM A2	14

**BT TOOLHOLDERS
MAS 403 BT (JIS B 6339)
GREENSTOCK BLANK**

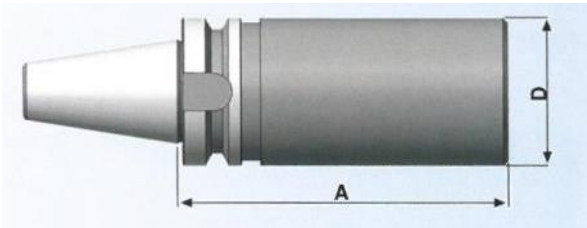


Standard blanks



Part No	BT	D	A
BT30-BB-050-160	BT 30	50	160
BT40-BB-063-250	BT 40	63	250
BT40-BB-104-200	BT 40	104	200
BT50-BB-097-315	BT 50	97	315
BT50-BB-104-350	BT 50	104	350
BT50-BB-134-250	BT 50	134	250

Special blanks



Part No	BT	D	A
BT30-BB-045-100	BT 30	50	160
BT30FC-BB-036-110	BT 30	36	110
BT30FC-BB-045-140	BT 30	45	140
BT30FC-BB-075-170	BT 30	75	170
BT40-BB-082-280	BT 40	82	280
BT40-BB-125-110X	BT 40	125	110
BT50-BB-150-350	BT 50	150	350

← Face and Taper contact

← Face and Taper contact

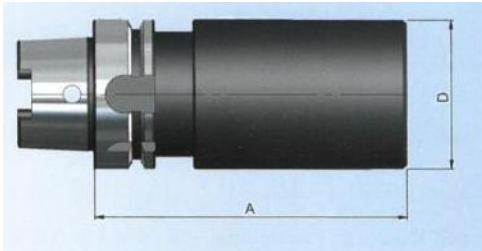
← Face and Taper contact

Note: Specials can be made available on request.
Please call our Sales Office with your requirements

HSK TOOLHOLDERS ISO 12164 (DIN 69893) GREENSTOCK BLANK

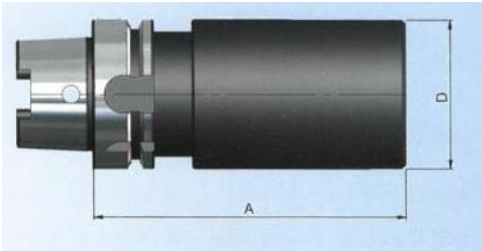


Standard blanks



Part No	HSK	FORM	D	A
HSK32A-BB-025-150	HSK32	A	25	150
HSK32A-BB-032-100	HSK32	A	32	100
HSK32C-BB-040-160	HSK32	C	40	160
HSK40A-BB-040-120	HSK40	A	40	120
HSK40A-BB-040-150	HSK40	A	40	150
HSK40A-BB-070-100	HSK40	A	70	100
HSK40C-BB-050-160	HSK40	C	50	160
HSK40C-BB-063-150	HSK40	C	63	150
HSK50A-BB-050-150	HSK50	A	50	150
HSK50A-BB-075-070	HSK50	A	75	70
HSK50C-BB-063-200	HSK50	C	63	200
HSK63A-BB-063-160	HSK63	A	63	160
HSK63A-BB-063-250	HSK63	A	63	250
HSK63A-BB-063-310	HSK63	A	63	310
HSK63A-BB-080-250	HSK63	A	80	250
HSK63A-BB-120-160	HSK63	A	120	160
HSK63C-BB-080-200	HSK63	C	80	200
HSK80A-BB-080-250	HSK80	A	80	250
HSK80A-BB-090-310	HSK80	A	90	310
HSK80A-BB-100-250	HSK80	A	100	250
HSK80A-BB-150-150	HSK80	A	150	150
HSK100A-BB-090-300	HSK100	A	90	300
HSK100A-BB-097-250	HSK100	A	97	250
HSK100A-BB-100-300	HSK100	A	100	300
HSK100A-BB-120-160	HSK100	A	120	160
HSK100A-BB-120-315	HSK100	A	120	315

Special blanks



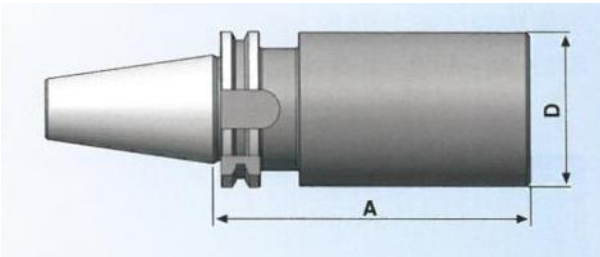
Part No	HSK	FORM	D	A
HSK50A-BB-138-245	HSK50	A	138	245
HSK63A-BB-063-100	HSK63	A	63	100
HSK63A-BB-160-260	HSK63	A	160	260
HSK100A-BB-075-315	HSK100	A	75	315
HSK100A-BB-080-410	HSK100	A	80	410

Note: Specials can be made available on request.
Please call our Sales Office with your requirements

DV TOOLHOLDERS SK (DIN 69871) GREENSTOCK BLANK

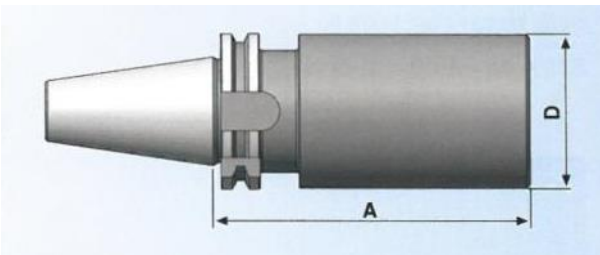


Standard blanks



Part No	DV	D	A
DV40-BB-063-250	40	63	250
DV40-BB-063-280	40	63	280
DV40-BB-082-280	40	82	280
DV40-BB-104-200	40	104	200
DV50-BB-097-315	50	97	315
DV50-BB-104-350	50	104	350
DV50-BB-134-250	50	134	250

Special blanks



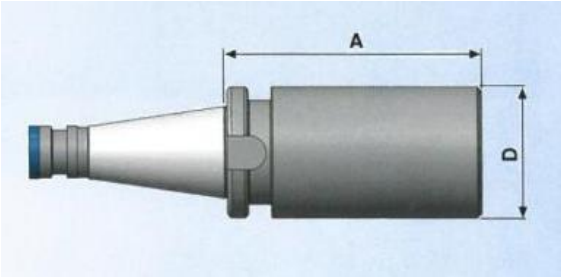
Part No	DV	D	A
DV40-BB-063-100	40	63	100
DV40-BB-063-165	40	63	165
DV50-BB-090-100	50	90	100
DV50-BB-095-315	50	95	315
DV50-BB-110-200	50	110	200
DV50-BB-150-250	50	150	250
DV50-BB-180-200	50	180	200

Note: Specials can be made available on request.
Please call our Sales Office with your requirements

DT TOOLHOLDERS DK (DIN 2080) GREENSTOCK BLANK

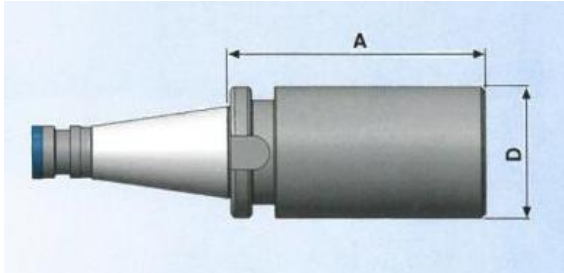


Standard blanks



Part No	DT	D	A
DT40-BB-063-250	40	63	250
DT50-BB-097-315	50	97	315

Special blanks



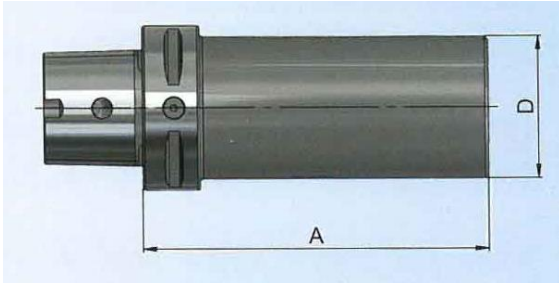
Part No	DT	D	A
DT50-BB-062-344	50	62	344

Note: Specials can be made available on request.
Please call our Sales Office with your requirements

P TOOLHOLDERS EPS (ISO 26623-1) GREENSTOCK BLANK



Standard blanks

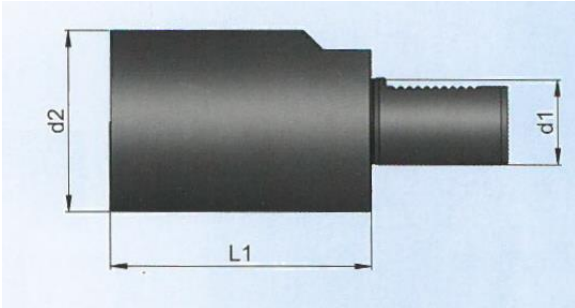


Part No	P	D	A
P3-BB-032-125	3	32	125
P4-BB-040-095	4	40	95
P4-BB-040-120	4	40	120
P4-BB-040-165	4	40	165
P4-BB-060-165	4	60	165
P4-BB-063-165	4	63	165
P4-BB-070-100	4	70	100
P4-BB-080-075	4	80	75
P4-BB-080-120	4	80	120
P4-BB-100-085	4	100	85
P5-BB-050-125	5	50	125
P5-BB-050-150	5	50	150
P5-BB-050-175	5	50	175
P5-BB-075-175	5	75	175
P5-BB-090-080	5	90	80
P5-BB-095-150	5	95	150
P5-BB-110-090	5	110	90
P6-BB-063-180	6	63	180
P6-BB-063-195	6	63	195
P6-BB-063-310	6	63	310
P6-BB-080-250	6	80	250
P8-BB-080-200	8	80	200
P8-BB-110-140	8	110	140
P8-BB-115-160	8	115	160
P8-BB-120-160	8	120	160
P8-BB-130-090	8	130	90
P8-BB-145-200	8	145	200
P8-BB-150-200	8	150	200

VDI STATIC TOOLING DIN69880 FORM A2 GREENSTOCK BLANK



Standard blanks



Part No	L1	d2	d1
VDI-16-A2 60	60	40	16 x 60
VDI-20-A2 70	70	50	20 x 70
VDI-25-A2 080	80	58	25 x 80
VDI-25-A2 200	200	58	25 x 200
VDI-30-A2 100	100	68	30 x 100
VDI-30-A2 240	240	68	30 x 240
VDI-40-A2 120	120	83	40 x 120
VDI-40-A2 300	300	83	40 x 320
VDI-50-A2 135	135	98	50 x 135
VDI-50-A2 400	400	98	50 x 400

Specials

Not in the standard Blank range?

Please contact us to discuss the design and manufacture of any special green stock blanks to suit your specifications.

High Performance Toolholders

Coventry Toolholders offer a range of high performance toolholders to enhance cutting tool performance.



Range available - Taper Types - BT MAS403, SK/DIN69871, HSK and Polygon
Taper High performance toolholders are balanced to G2.5@25,000

Toolholders for Turning Machines

VDI Static Tooling. (DIN 69880, VDI 3425)



A complete range of precision tooling systems to suit VDI (DIN 69880-1, VDI3425) type machines with shank sizes VDI 20, 25, 30, 40, 50, 60.

The chucks are complemented by a full range of accessories such as collets, spanners, bushes etc.

Driven Tool Holders for CNC Turning Centres.

A complete range of precision standard and bespoke tooling systems to suit the majority of driven toolholder type machines.

The range covers axial and radial type toolholders for both face and peripheral mount type turrets. As well as the standard DIN couplings more specialised interfaces for machines such as Mori Seiki, Mazak, Okuma and Haas are also available. A range of driven toolholders with a quick change front end tooling system is also available.



ISO 26623-1 Polygon Taper Toolholders

Toolholders are manufactured to the ISO 26623-1 standard and are compatible with all machines with polygon style spindle tapers. Made from high grade steel hardened to 58HRC quality and durability is assured.



Taper sizes P3, P4, P5, P6, P7, P8.

High performance toolholders are balanced to G2.5@25,000

Toolholders for Vertical Turning Machines

Block Type Toolholders

Block type toolholders available in a range of gauge lengths and square shank tool sizes to suit Hankook, You-Ji, Toshiba, Massa and Yu-Shine machines.



Boring Bar type Toolholders

Available in varying gauge lengths to suit square shank tooling and cylindrical boring bars.



Modular type Toolholders

Enables the clamping of modular tooling systems. This allows flexibility in cutting tool choice and reduces set up time. Capto, KM, HSK and many other modular type systems are available.



DIN 69893 HSK 'T' ICTM Tolerance

Toolholders manufactured to the ICTM HSK 'T' standard have repeatability within +/- 0.005mm following a toolchange cycle. This is critical when machining requires the cutting tool to be aligned on centre. Made from high grade steel hardened to 58HRC.



Range available - Taper sizes HSK40, 50, 63, 100

Various styles of Tip Pocket Toolholders, Blanks for custom tool manufacture

Boring Bar Holders, Square Shank Toolholders, Turret and Straight Shank Clamping Units

